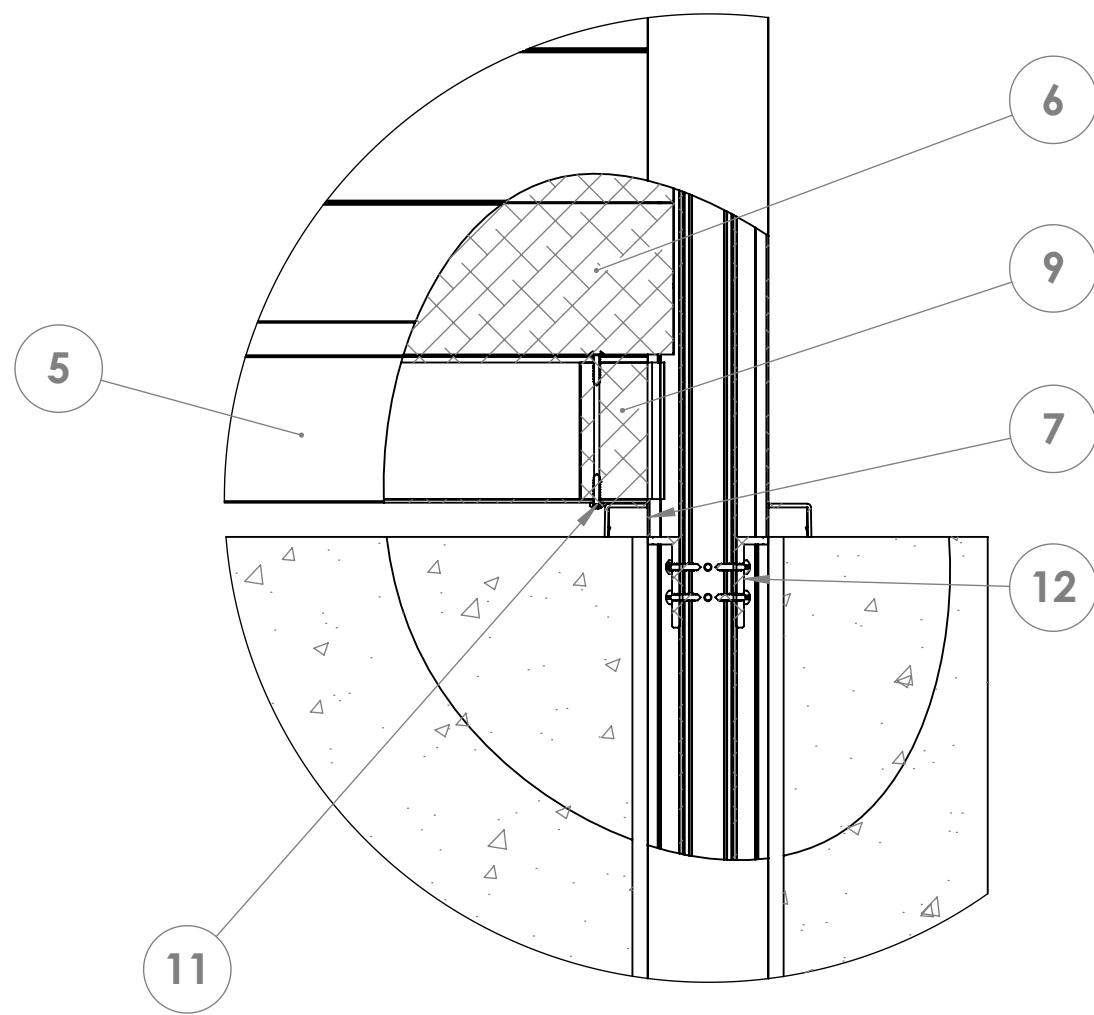
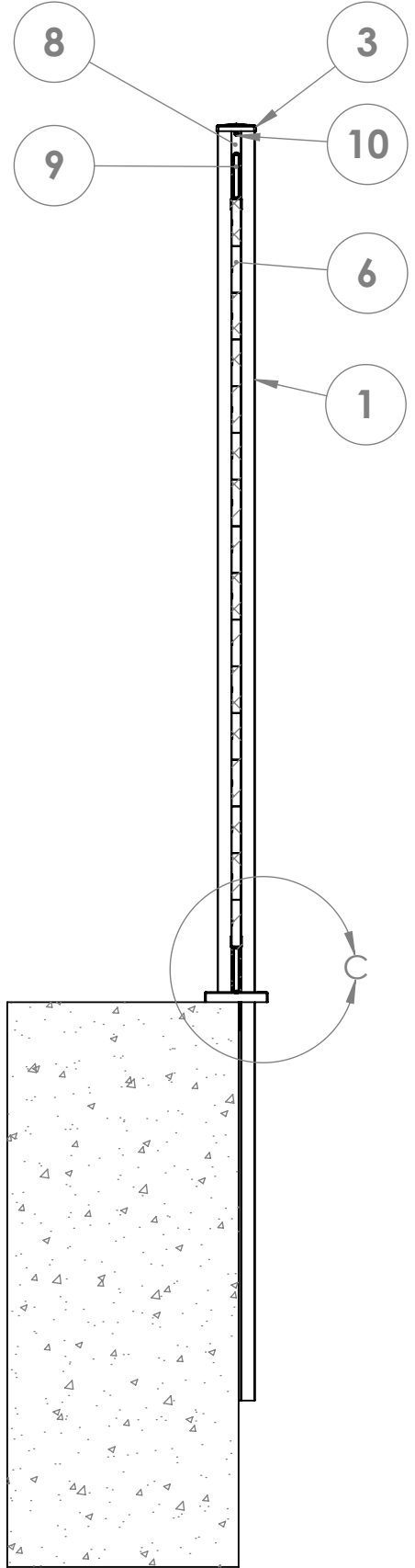
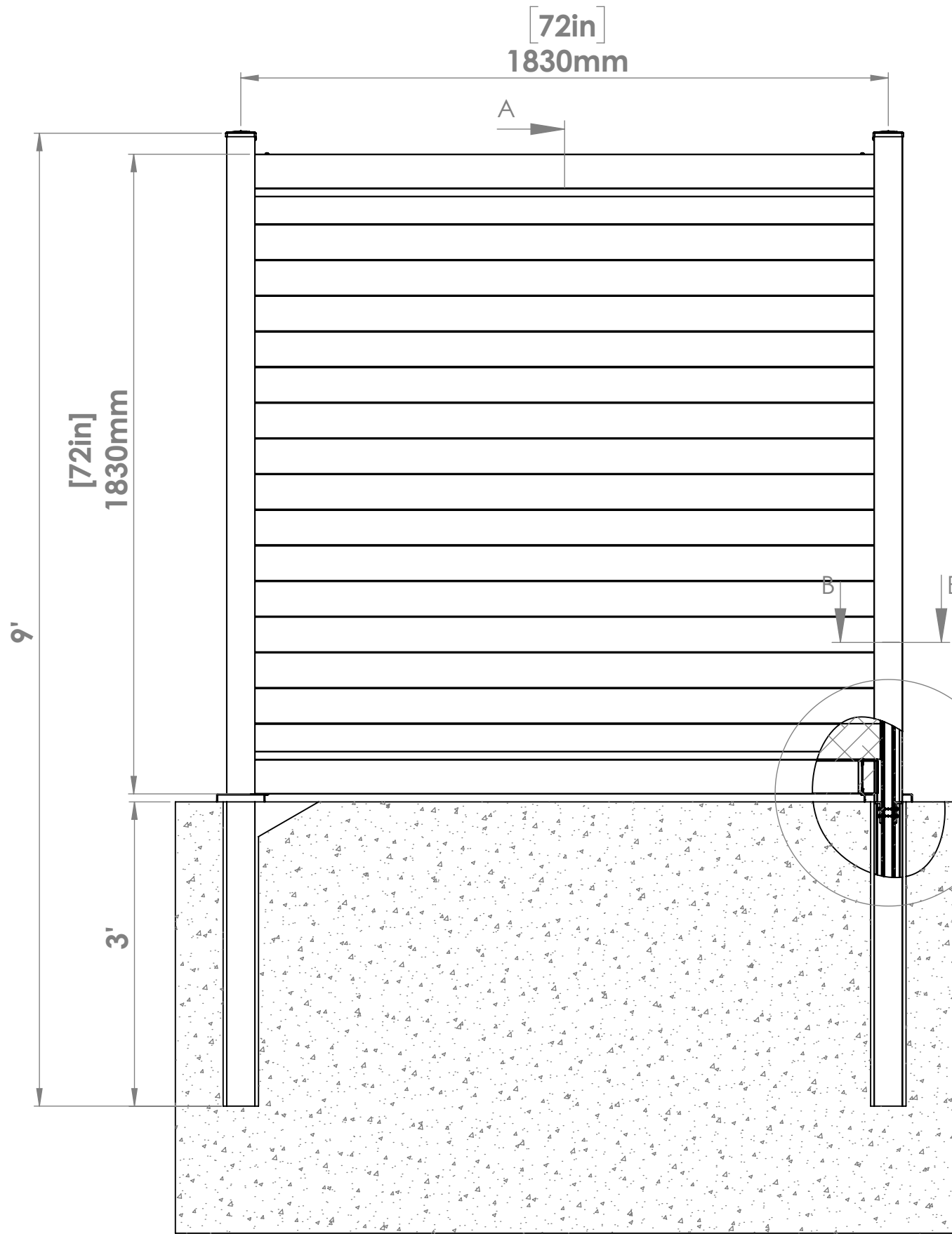
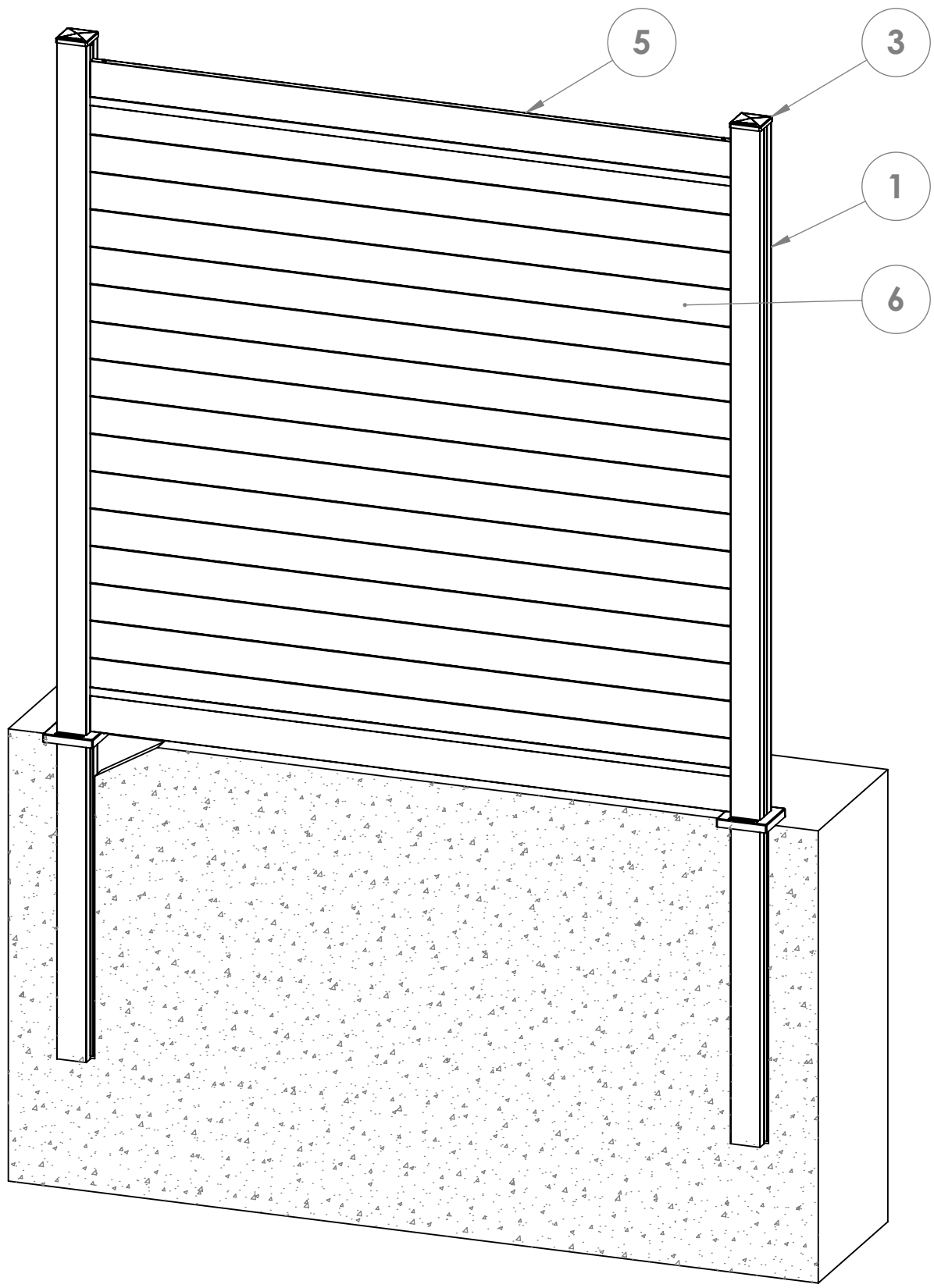
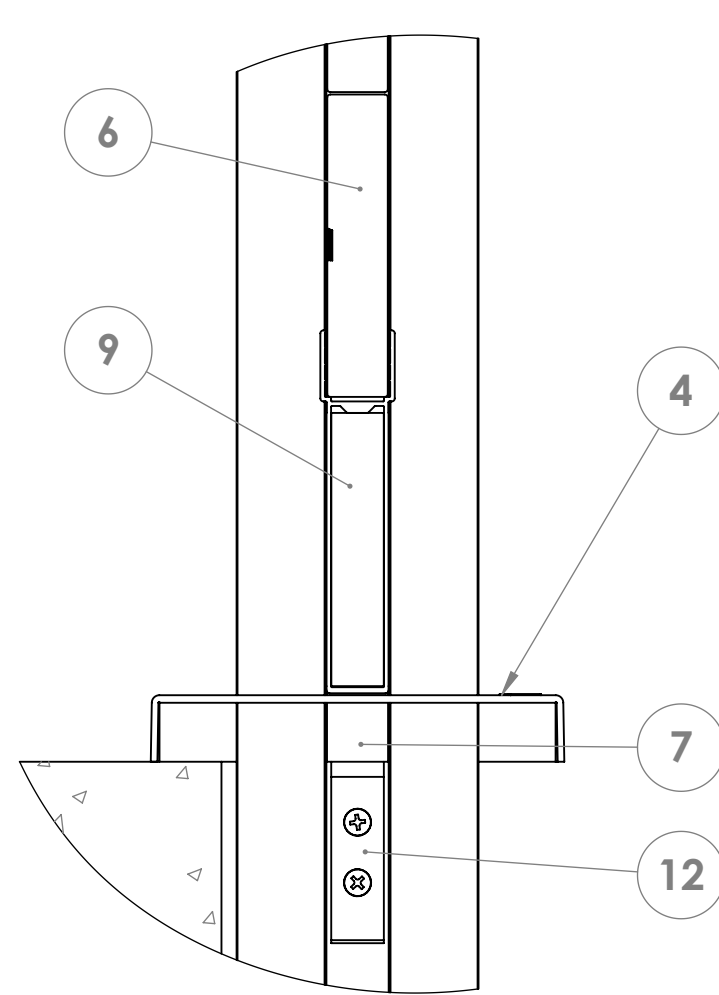


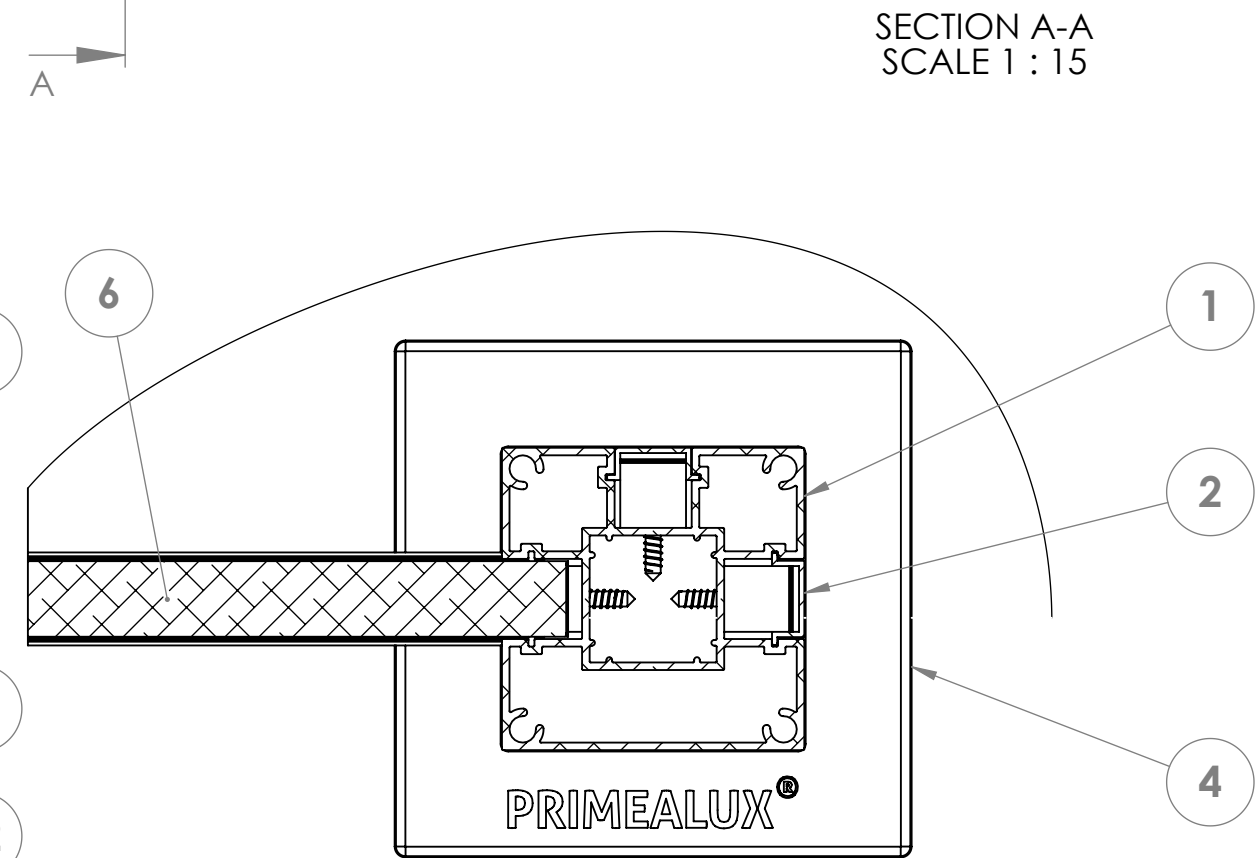
| ITEM NO. | DESCRIPTION | CODE | SIZE (mm-inches) | QTY | FIGURE |
|----------|---|--------|------------------|-----|---|
| 1 | POST | P8009 | 2750 108" | 1 |  |
| 2 | 6' POST COVER | PC06 | 1890 74 3/8" | 1 |  |
| 3 | POST CAP | CP80 | — | 1 |  |
| 4 | BASE PLATE CAP | BC80 | — | 1 |  |
| 5 | RAIL (TOP/BOTTOM) | FR06 | 1750 68 7/8" | 2 |  |
| 6 | ALU SLAT 6' HORIZONTAL | S10070 | 1785 70 1/4" | 16 |  |
| 7 | BOTTOM SPACER | SP025 | 25 1" | 2 |  |
| 8 | TOP SPACER TO BE DRILLED ON SITE | SP060 | 60 2 3/8" | 2 |  |
| 9 | RAIL BRACKET 4" | RB4 | 90 3 35/64" | 4 |  |
| 10 | PAN HEAD SCREW | FS4232 | m4.2x32 mm | 2 |  |
| 11 | PAN HEAD SCREW | FS4219 | m4.2x19 mm | 4 |  |
| 12 | ANGLE BRACKET (COMES PRE ASSEMBLED) | AB020 | 20 13/16" | 3 |  |



DETAIL D
SCALE 1 : 5



DETAIL C
SCALE 1 : 5



SECTION B-B
SCALE 1 : 2



TITLE : W 6' x H 6' UNDER GROUND PRIVACY HORIZONTAL FENCE

email: Info@primealux.com
website: www.primealux.com

NOTES :

- DIMENSIONS IN BRACKETS [] ARE IN INCHES.
- TOLERANCES: LINEAR: +-1 mm or [1/16"], ANGULAR: +-1 Deg.
- CONSULT LOCAL CONDITIONS, CODES FOR FOUNDATION.
- INSTALLATION TO BE COMPLETED PER MANUFACTURER'S SPECIFICATION.
- THIS DRAWING IS PROVIDED FOR PLANNING PURPOSES ONLY.
- SIZES ARE APPROXIMATED AND COULD VARY DEPENDING ON THE SYSTEM OF CHOICE, PLEASE REFER TO THE INSTALLATION MANUAL FOR MORE DETAILED DIMENSIONS.
- OVERALL WIDTH IS MEASURED FROM POST CENTER TO POST CENTER.